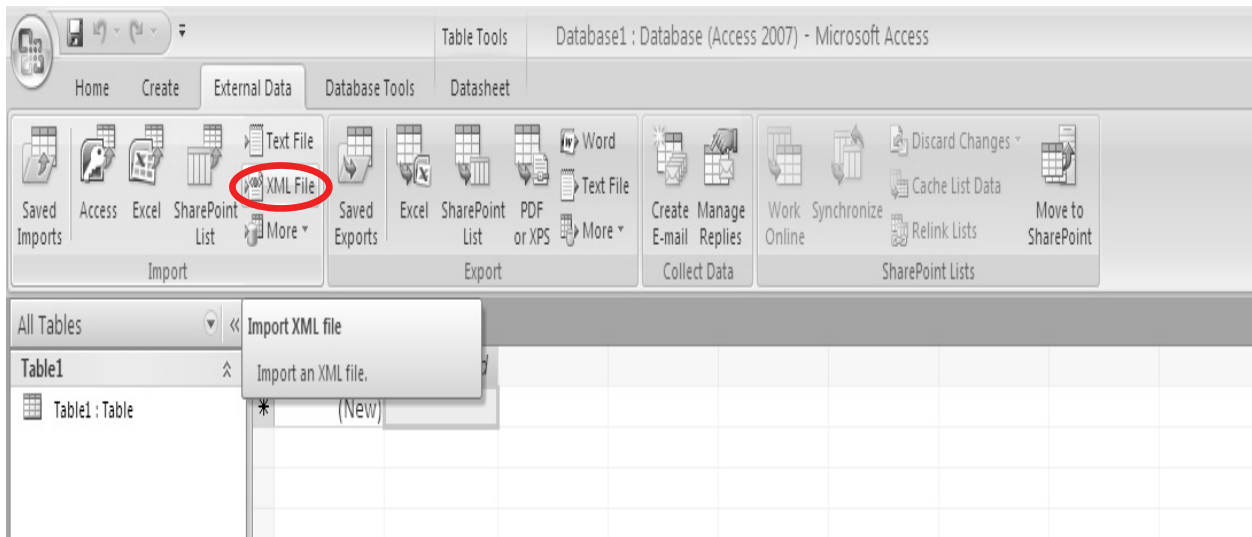


Microsoft Office 2007

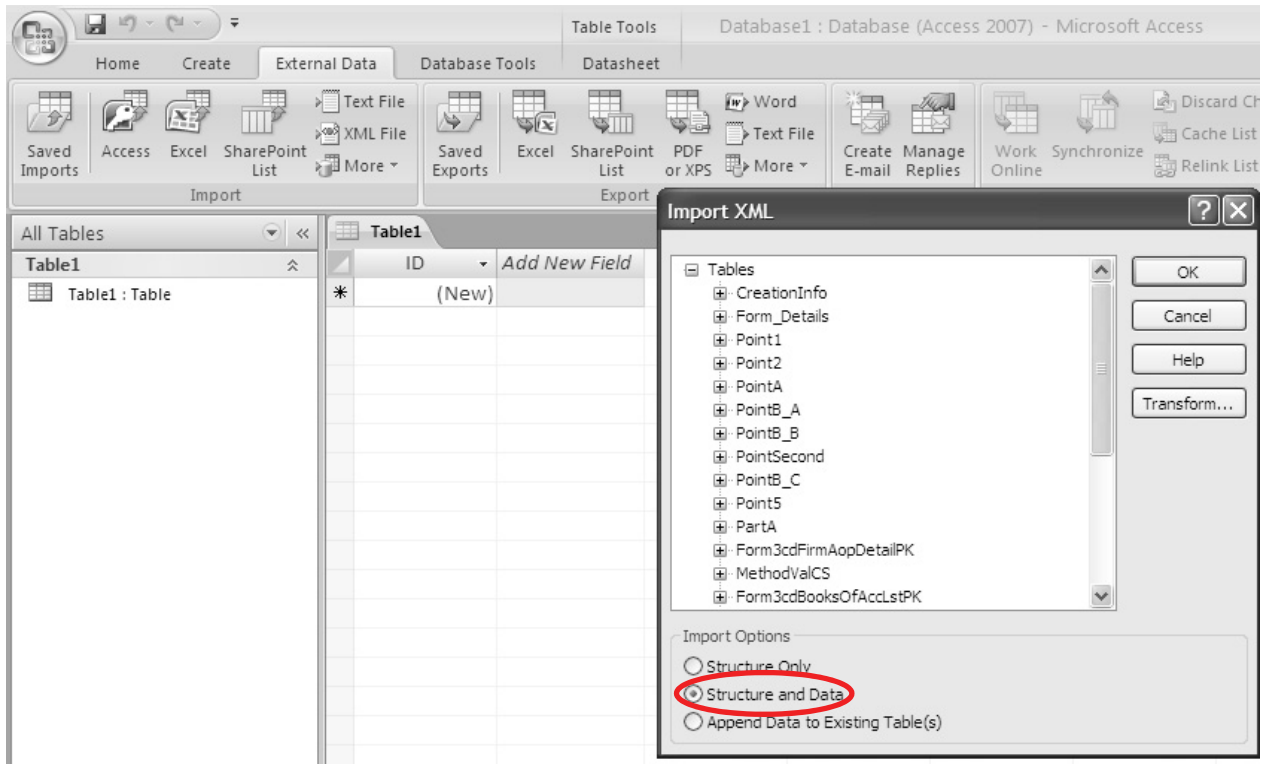
Step 1: Create Blank Database from the template available



Step 2: Under External Data Tab > Import > XML File – Select the Draft File which is prepared by using eUtility given by Income Tax Department.



Step 3: Select Import Options – Structure and Data

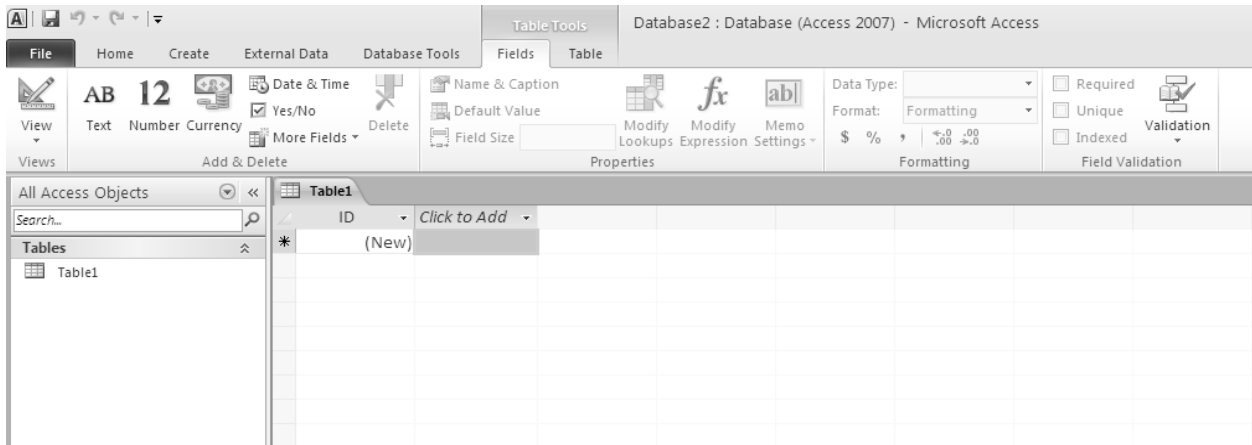


Step 4: After successful import, you can see the data like below.

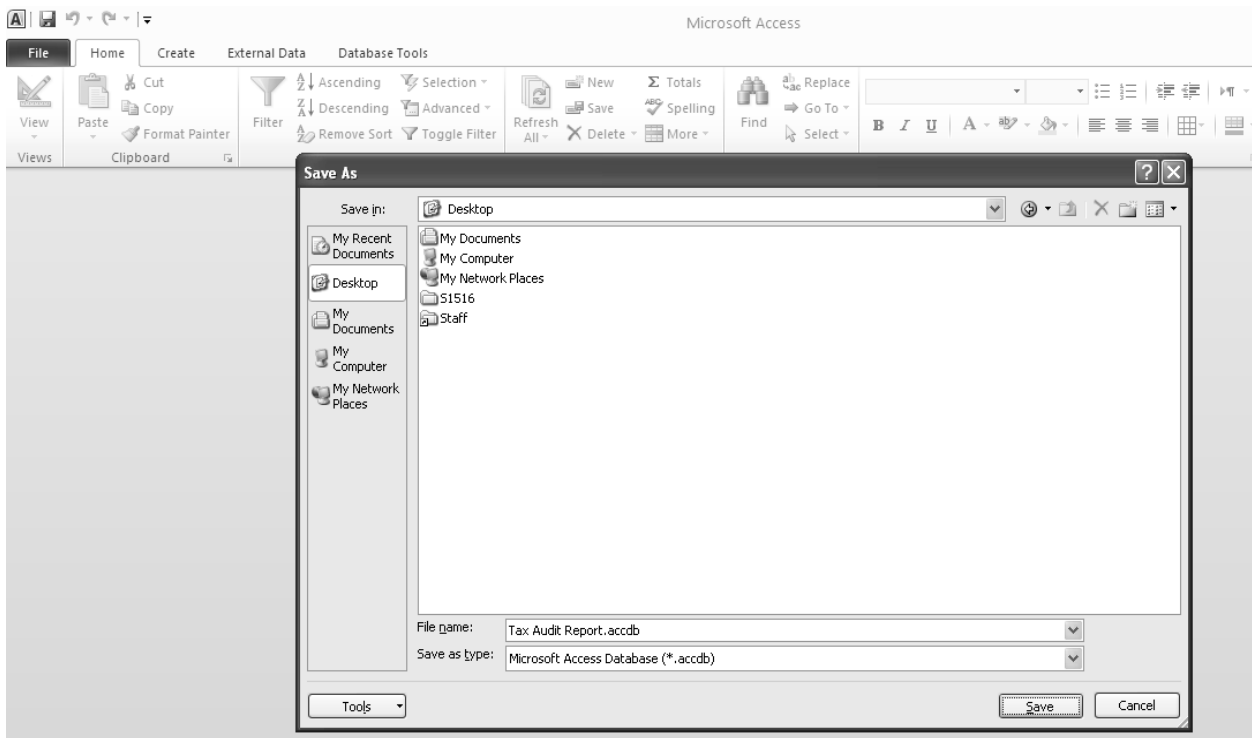
DescBlockAs	RateOfDep	ActualCostV	DepAllowab	WrittenDow	AddtnOrSub	DateAddnC	Particulars	Amount	Date
ENERGY SAVIN	80	1	1	0					
COMPUTER	60	5070467	3042280	2028187					
COMPUTER	60	0	254675	169783	A	2012-05-05	NEW ASSET PU	424458	0
COMPUTER	60	0	262889	613406	A	2013-02-02	NEW ASSET PU	876295	0
CAPITALISED S	60	0	728400	485600	A	2012-05-05	NEW ASSET	1214000	0
CAPITALISED S	60	0	382190	891775	A	2013-02-02	NEW ASSET	1273965	0
AIR CONDITION	15	4896341	734451	4161890					
BICYCLE	15	1825	274	1551					
BOILER	15	18477	2772	15705					
ELECTRICAL AC	15	8469769	1270465	7199304					
ELECTRICAL HO	15	6070	910	5160					
ELECTRICAL INS	15	4894844	734226	4160618					
EPABX	15	5959	894	5065					
FACTORY EQUI	15	5860491	879073	4981418					
FORKLIFT	15	11321	1698	9623					
GENERATOR	15	3276679	491502	2785177					
MOTOR CYCLE	15	183307	26296	149011	D	2012-07-01	OLD BIKE GIVE	8000	0

Microsoft Office 2010

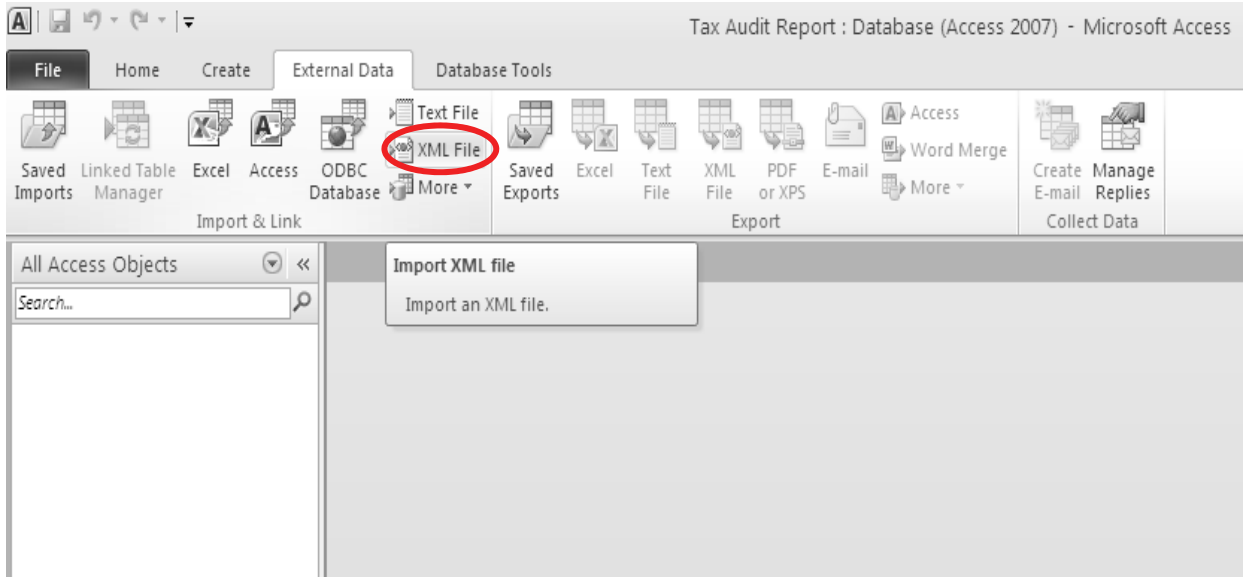
Step 1: Create Blank Database from the template available



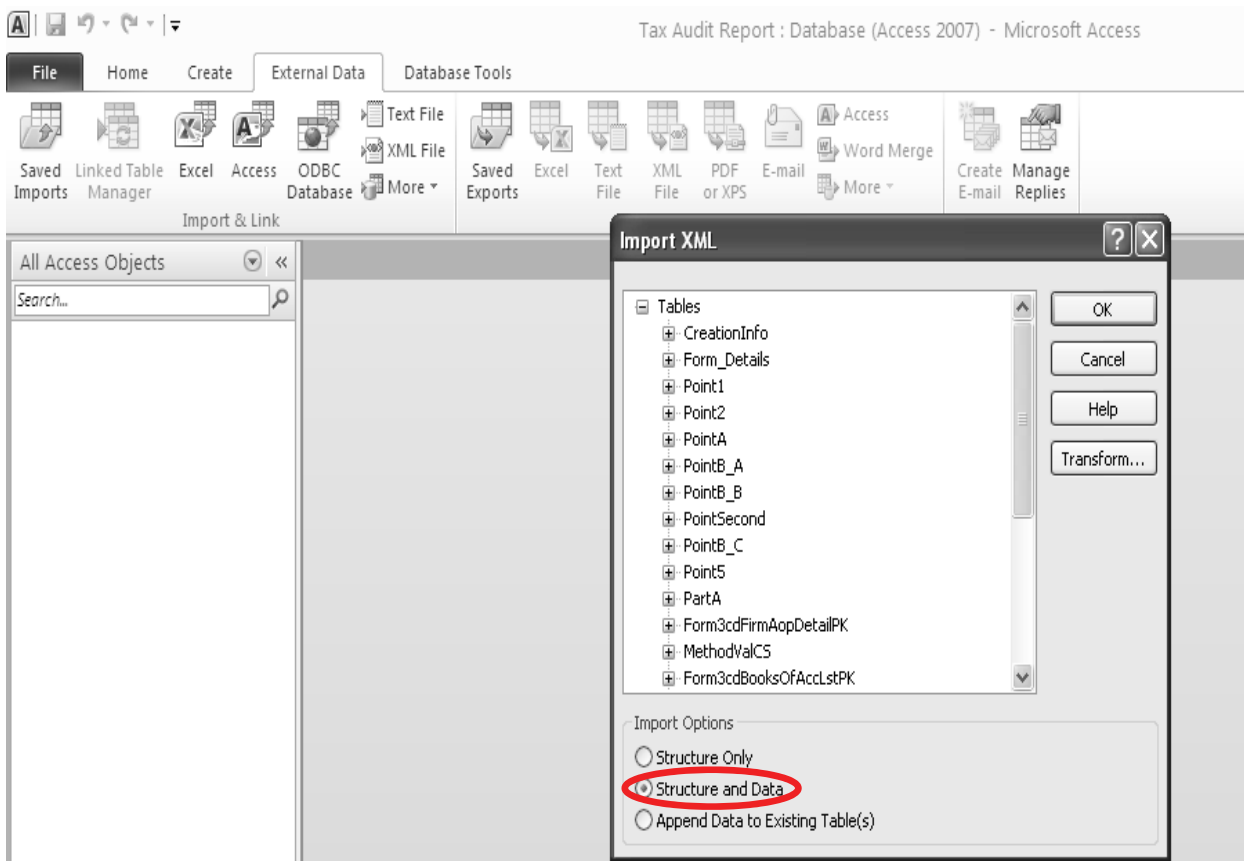
Step 2: Before importing Data first we have to save the file



Step 3: Under External Data Tab > Import > XML File – Select the Draft File which is prepared by using eUtility given by Income Tax Department.



Step 4: Select Import Options – Structure and Data

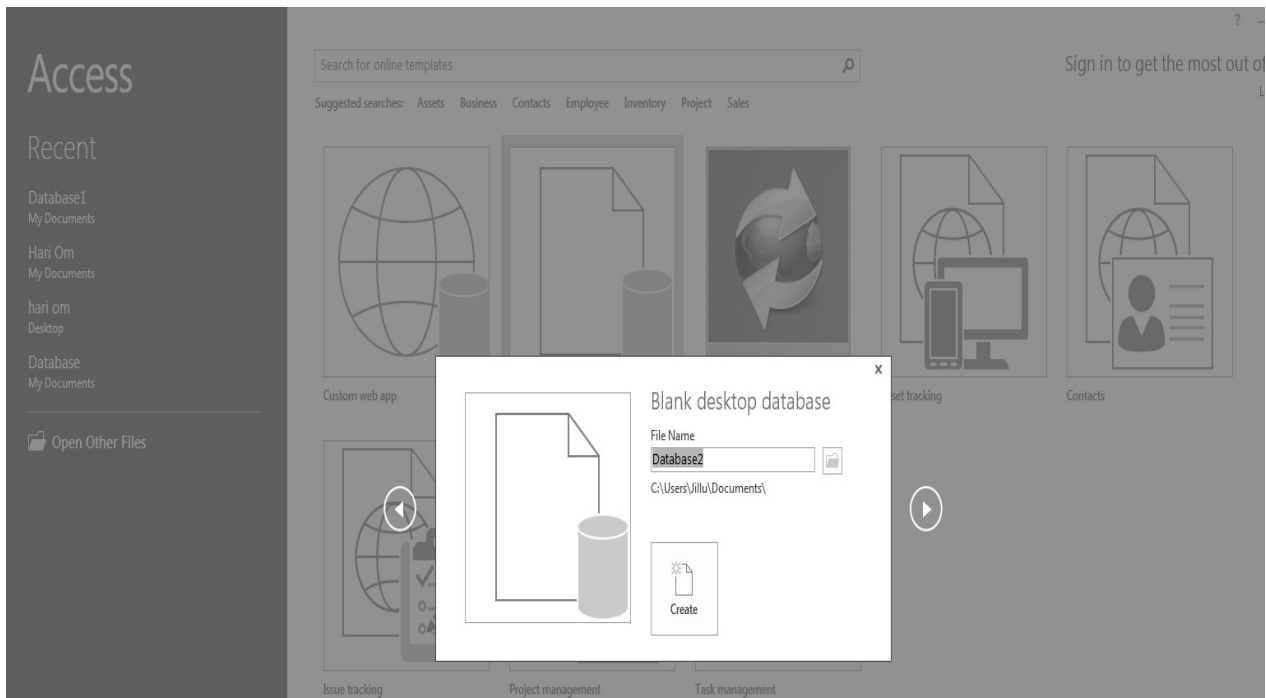


Step 5: After successful import, you can see the data like below.

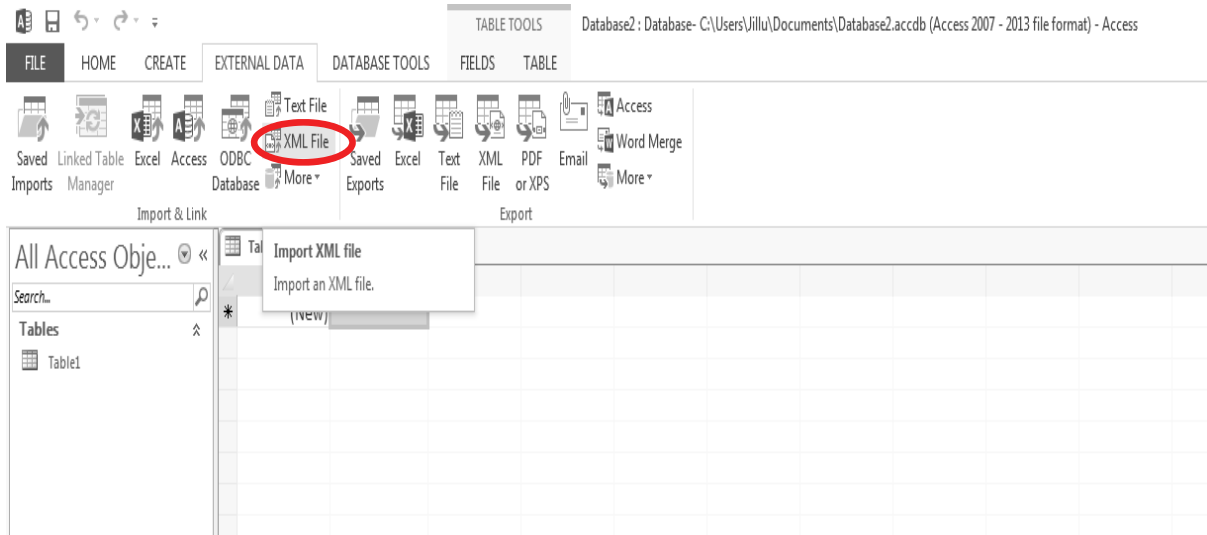
DescBlockAssets	RateOfDep	ActualCostV	DepAllowab	WrittenDow	AddtnOrSub	DateAddtnC	Particulars	Amount	DatePutToU
ENERGY SAVING DEVICES	80	1	1	0					
COMPUTER	60	5070467	3042280	2028187					
COMPUTER	60	0	254675	169783	A	2012-05-05	NEW ASSET PU	424458	0
COMPUTER	60	0	262889	613406	A	2013-02-02	NEW ASSET PU	876295	0
CAPITALISED SOFTWARE	60	0	728400	485600	A	2012-05-05	NEW ASSET	1214000	0
CAPITALISED SOFTWARE	60	0	382190	891775	A	2013-02-02	NEW ASSET	1273965	0
AIR CONDITIONER	15	4896341	734451	4161890					
BICYCLE	15	1825	274	1551					
BOILER	15	18477	2772	15705					
ELECTRICAL ACCESSORIES	15	8469769	1270465	7199304					
ELECTRICAL HOIST	15	6070	910	5160					
ELECTRICAL INSTALLATION	15	4894844	734226	4160618					
EPABX	15	5959	894	5065					
FACTORY EQUIPMENT	15	5860491	879073	4981418					

Microsoft Office 2013

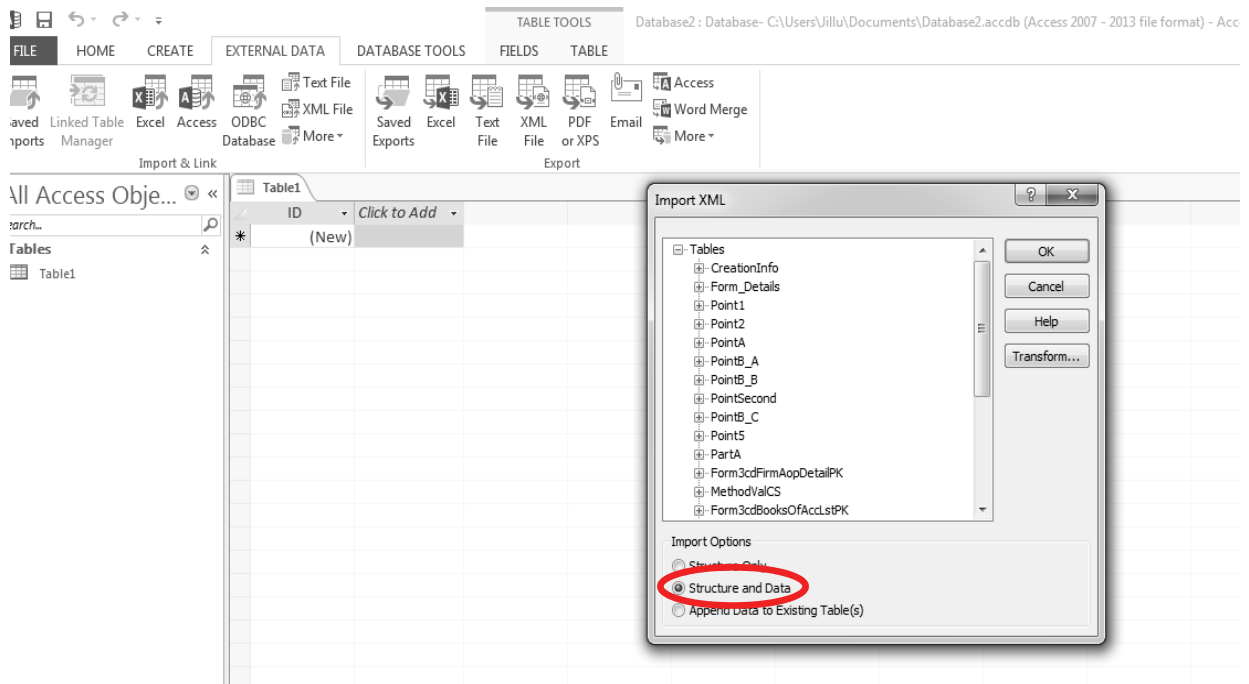
Step 1: Create Blank Desktop Database from the template available



Step 2: Under External Data Tab > Import > XML File – Select the Draft File which is prepared by using eUtility given by Income Tax Department.



Step 3: Select Import Options – Structure and Data



Step 4: After successful import, you can see the data like below.

The screenshot displays the Microsoft Access interface with the 'TABLE TOOLS' ribbon active. The main window shows a table with the following data:

DescBlockAssets	RateOfDep	ActualCostV	DepAllowat	WrittenDow	AddtnORSub	DateAddtnC	Particulars	Amount	DatePutToU	AdjModVal
ENERGY SAVING DEVICES	80	1	1	0						
COMPUTER	60	5070467	3042280	2028187						
COMPUTER	60	0	254675	169783	A	2012-05-05	NEW ASSET PU	424458	0	0
COMPUTER	60	0	262889	613406	A	2013-02-02	NEW ASSET PU	876295	0	0
CAPITALISED SOFTWARE	60	0	728400	485600	A	2012-05-05	NEW ASSET	1214000	0	0
CAPITALISED SOFTWARE	60	0	382190	891775	A	2013-02-02	NEW ASSET	1273965	0	0
AIR CONDITIONER	15	4896341	734451	4161890						
BICYCLE	15	1825	274	1551						
BOILER	15	18477	2772	15705						
ELECTRICAL ACCESSORIES	15	8469769	1270465	7199304						
ELECTRICAL HOIST	15	6070	910	5160						
ELECTRICAL INSTALLATION	15	4894844	734226	4160618						
EPABX	15	5959	894	5065						
FACTORY EQUIPMENT	15	5860491	879073	4981418						
FORKLIFT	15	11321	1698	9623						
GENERATOR	15	3276679	491502	2785177						
MOTOR CYCLE	15	183307	26296	149011	D	2012-07-01	OLD BIKE GIVE	8000	0	
MOTOR CYCLE	15	0	5555	68990	A	2012-02-02	NEW BIKE PUR	74064	0	